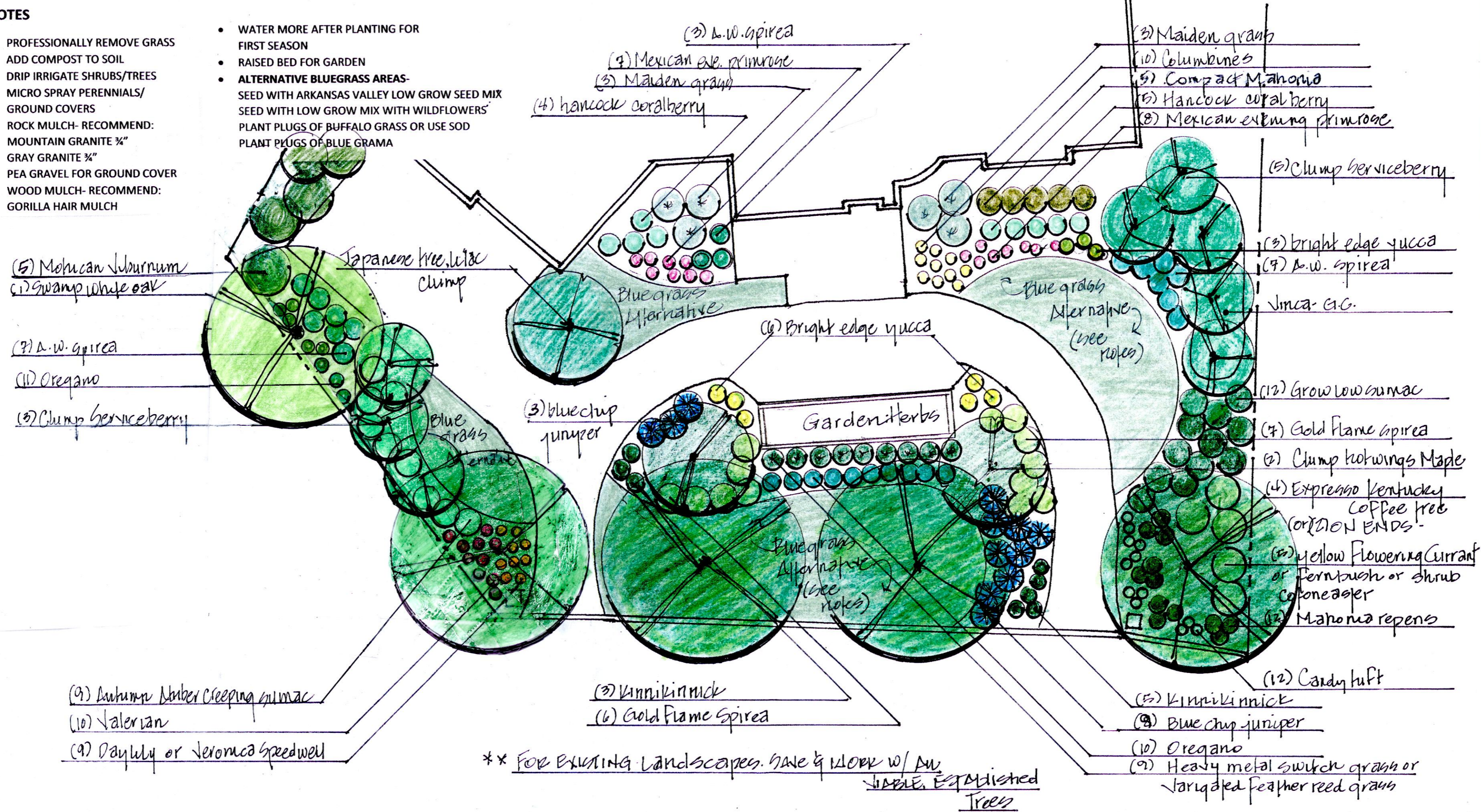


**NOTES**

- PROFESSIONALLY REMOVE GRASS
- ADD COMPOST TO SOIL
- DRIP IRRIGATE SHRUBS/TREES
- MICRO SPRAY PERENNIALS/ GROUND COVERS
- ROCK MULCH- RECOMMEND: MOUNTAIN GRANITE 3/4" GRAY GRANITE 3/4" PEA GRAVEL FOR GROUND COVER
- WOOD MULCH- RECOMMEND: GORILLA HAIR MULCH

- WATER MORE AFTER PLANTING FOR FIRST SEASON
- RAISED BED FOR GARDEN
- **ALTERNATIVE BLUEGRASS AREAS-** SEED WITH ARKANSAS VALLEY LOW GROW SEED MIX SEED WITH LOW GROW MIX WITH WILDFLOWERS\* PLANT PLUGS OF BUFFALO GRASS OR USE SOD PLANT PLUGS OF BLUE GRAMA



**XERISCAPE CONCEPT THREE- NORTH AND EAST EXPOSURE (SEMI-SHADE)**  
 (BLUEGRASS ALTERNATIVE AREAS, GARDEN, SHADE TREES, CLUMP TREES, SHRUBS)  
 Scale: 1/16"=1'-0"

HERITAGE HILLS  
 LONE TREE, COLORADO

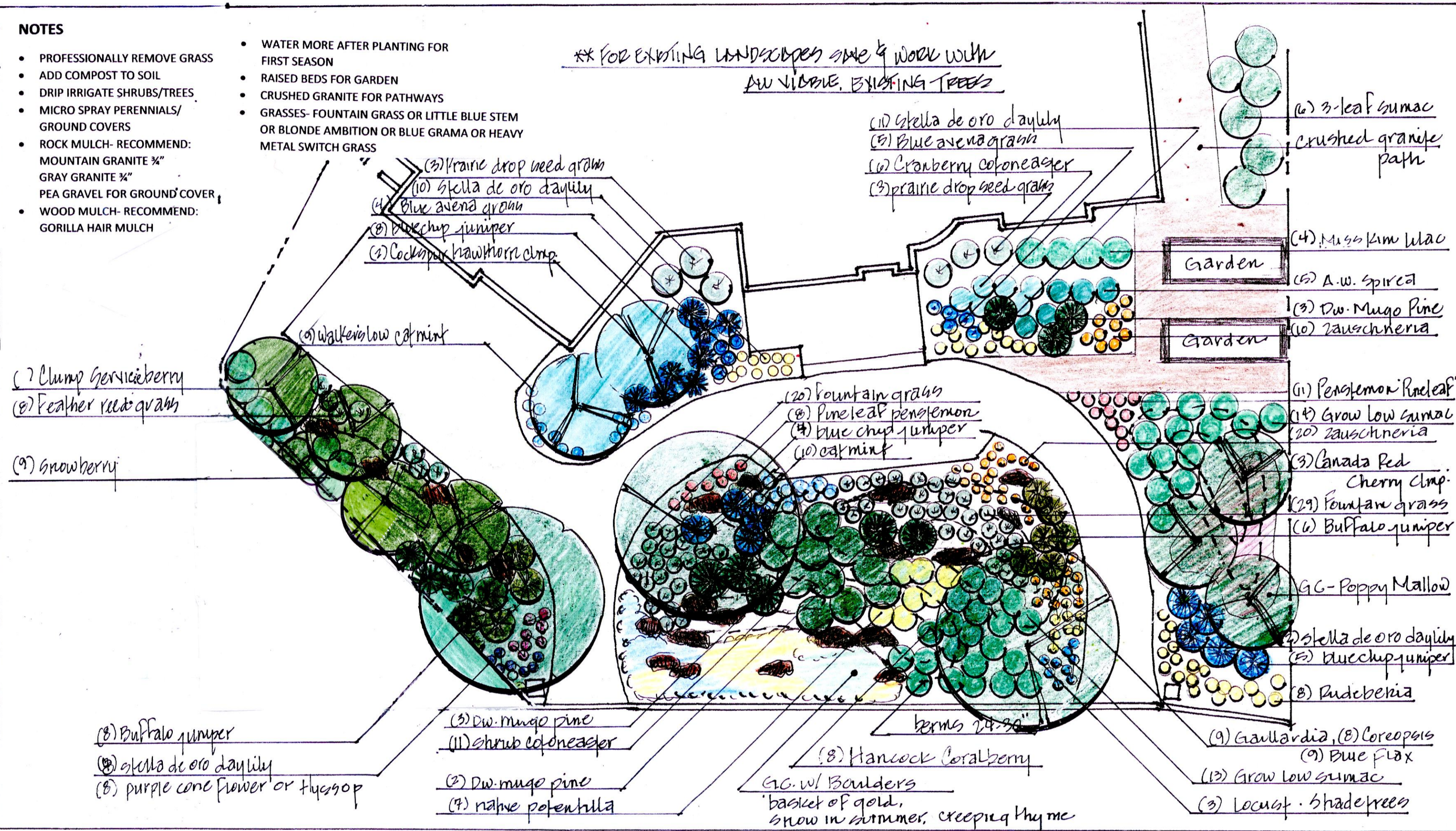
*S. McCabe*  
 DESIGNED BY,  
 JULY 2023 SUSAN MCCABE, ASLA, RLA

**NOTES**

- PROFESSIONALLY REMOVE GRASS
- ADD COMPOST TO SOIL
- DRIP IRRIGATE SHRUBS/TREES
- MICRO SPRAY PERENNIALS/ GROUND COVERS
- ROCK MULCH- RECOMMEND: MOUNTAIN GRANITE 3/4" GRAY GRANITE 3/4" PEA GRAVEL FOR GROUND COVER
- WOOD MULCH- RECOMMEND: GORILLA HAIR MULCH

- WATER MORE AFTER PLANTING FOR FIRST SEASON
- RAISED BEDS FOR GARDEN
- CRUSHED GRANITE FOR PATHWAYS
- GRASSES- FOUNTAIN GRASS OR LITTLE BLUE STEM OR BLONDE AMBITION OR BLUE GRAMA OR HEAVY METAL SWITCH GRASS

\*\* FOR EXISTING LANDSCAPES SAME & WORK WITH  
 AS W/ ABOVE, EXISTING TREES



**XERISCAPE CONCEPT TWO- SOUTH AND SOUTHEAST EXPOSURE**  
 (BERMS, GARDENS, PERENNIALS, SHADE TREES, CLUMP TREES, SHRUBS)  
 Scale: 1/16"=1'-0"

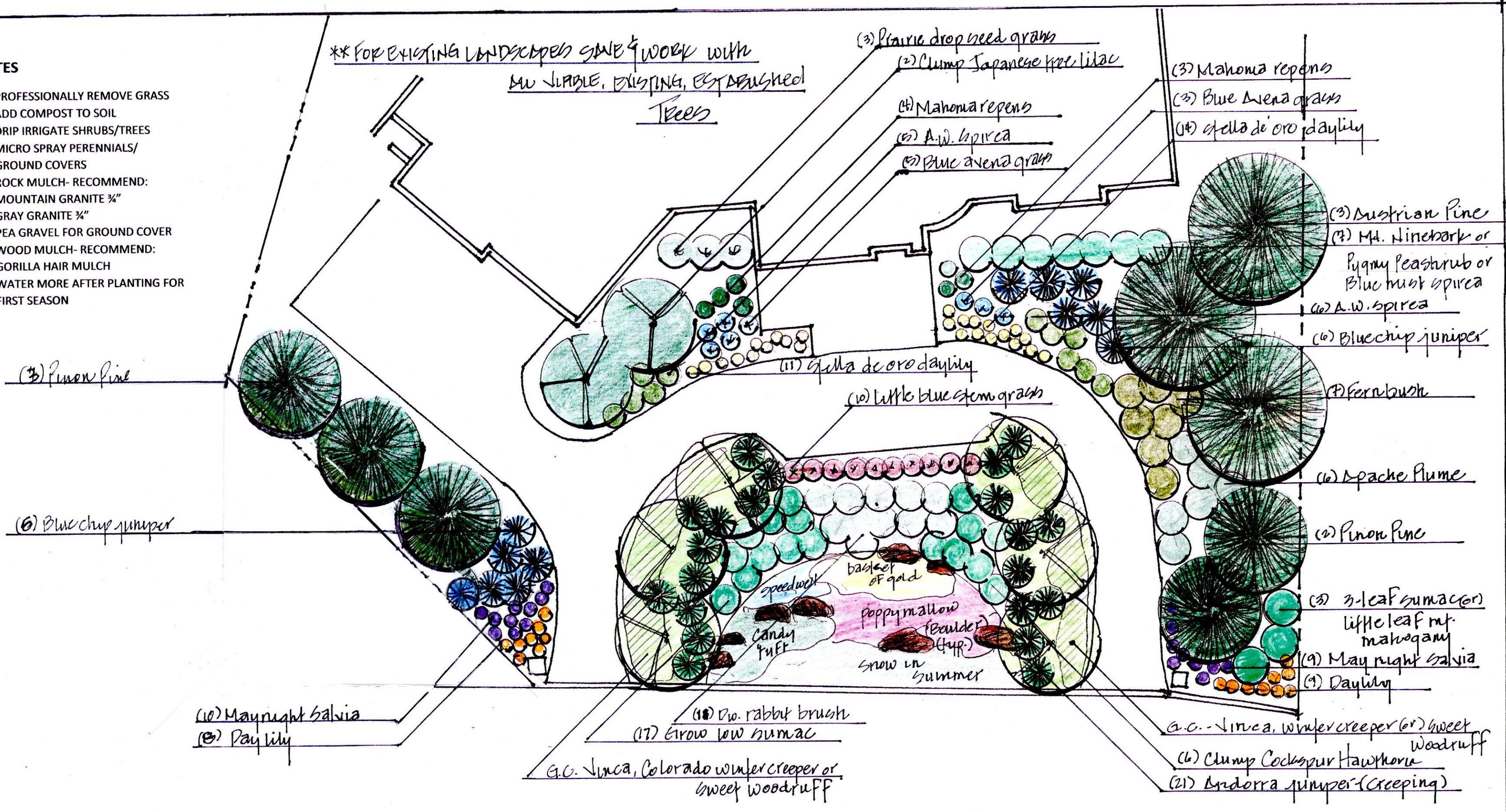
HERITAGE HILLS  
 LONE TREE, COLORADO

DESIGNED BY,  
 SUSAN MCCABE, ASLA, RLA  
 JULY 2023

**NOTES**

- PROFESSIONALLY REMOVE GRASS
- ADD COMPOST TO SOIL
- DRIP IRRIGATE SHRUBS/TREES
- MICRO SPRAY PERENNIALS/ GROUND COVERS
- ROCK MULCH- RECOMMEND: MOUNTAIN GRANITE 3/4" GRAY GRANITE 3/4"
- PEA GRAVEL FOR GROUND COVER
- WOOD MULCH- RECOMMEND: GORILLA HAIR MULCH
- WATER MORE AFTER PLANTING FOR FIRST SEASON

\*\* FOR EXISTING LANDSCAPES SAME & WORK WITH  
 AS LIABLE, EXISTING, ESTABLISHED  
 TREES



- (3) Prairie drop seed grass
- (2) Clump Japanese knotweed
- (3) Mahonia repens
- (3) Blue Avena grass
- (14) Stella de oro daylily
- (3) Austrian Pine
- (7) Mt. Ninebark or Pygmy Peashrub or Blue mist spirea
- (6) A.W. spirea
- (6) Bluechip juniper
- (7) Fernbush
- (6) Spache Plume
- (2) Pinon Pine
- (3) 3-leaf sumacer
- little leaf mt. mahogany
- (9) May night salvia
- (1) Daylily
- G.C. Vinca, winter creeper (or) Sweet Woodruff
- (6) Clump Cocksfoot Hawthorn
- (2) Andorra juniper (Creeping)

- (3) Pinon pine
- (6) Bluechip juniper
- (10) May night salvia
- (8) Day lily

- (11) Stella de oro daylily
- (10) little blue stem grass
- speedwell
- Candy tuft
- poppy mallow (boulder type)
- snow in summer
- (10) D.W. rabbit brush
- (17) Errow low sumac
- G.C. Vinca, Colorado winter creeper or Sweet Woodruff

**XERISCAPE CONCEPT ONE- WEST AND SOUTH EXPOSURE**  
 (PINE TREES, SHRUBS, PERENNIALS, GROUND COVERS, CLUMP TREES)  
 Scale: 1/16"=1'-0"

HERITAGE HILLS  
 LONE TREE, COLORADO

DESIGNED BY,  
 JULY 2023  
 SUSAN MCCABE, ASLA, RLA